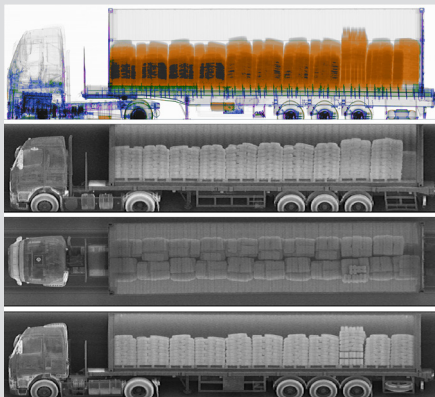


EAGLE G60 ZBx

MULTI-TECHNOLOGY, GANTRY-BASED CARGO AND VEHICLE INSPECTION SYSTEM

KEY FEATURES AND BENEFITS

- High-quality transmission imaging with three-color material discrimination
- Z Backscatter imaging for enhanced detection of organic threats and contraband
- Multiple views for detailed inspection



TOP: High-energy X-rays penetrate dense cargo.

BOTTOM: Photo-like images from three sides.

The Eagle® G60 ZBx multi-technology, multi-view cargo and vehicle inspection system offers high-quality transmission and Z Backscatter® imaging technologies for detailed inspection of cargo and containers.

The Eagle G60 ZBx gantry-based system features powerful 6 MeV transmission imaging that generates a high-resolution, colored image, enabling analysts to visually differentiate classes of materials to better validate manifests. Simultaneously, the system captures photo-like Z Backscatter images from three views for left-, right-, and top-side imaging of cargo, which highlight organic threats such as explosives and stowaways. The combination of technologies provides a comprehensive view of scanned cargo for efficient manifest verification and contraband detection.

SPECIFICATIONS

EAGLE G60 ZBx

TYPICAL GANTRY-MODE PERFORMANCE

	G60 ZBx-S	G60 ZBx-R	G60 ZBx-T	G60 ZBx-HP
Steel Penetration	330 mm	350 mm	360 mm	380 mm
Wire Resolution	1.2 mm	1 mm	1.2 mm	1.4 mm
Spatial Resolution	4 mm (H) 4 mm (V)	3 mm (H) 3 mm (V)	4 mm (H) 4 mm (V)	5 mm (H) 5 mm (V)

OPERATING FEATURES

- **X-ray Source:** 6 MeV (Tx)
- **Crew:** Scan coordinator and image analyst
- **Scan Modes:** Gantry mode and optional portal mode
- **Scanning Speed:** 0.2, 0.4, or 0.8 m/s gantry, 3–8 kph portal mode
- **System Throughput:** Up to 20 trucks per hour in gantry mode, up to 80 trucks per hour in portal mode

SYSTEM DIMENSIONS¹

- **Depth (excluding rails):** 9.8 m (32 ft 2 in)
- **Width:** 8.1 m (26 ft 7 in)
- **Height:** 6.8 m (22 ft 4 in)

Maximum Vehicle Dimensions:

- **Width:** 2.8 m (9 ft 2 in)
- **Height:** 5 m (16 ft 5 in)
- **Length:** 20 m (65 ft 7 in)

ENVIRONMENT

- **Operating Temperature:** -10° C to 40° C (14° F to 104° F)

HEALTH AND SAFETY

- **Radiation Control Area (RCA):** Determined by system configuration
- **Radiation Dose to Crew:** Less than 0.5 µSv in any one hour
- **Radiation Dose to Cargo²:** Less than 20 µSv per scan
- **Radiation Dose to Driver (portal mode):** Less than 0.25 µSv per scan
- **Enclosed Facility:** Recommended to reduce the size of the RCA

¹ Total site footprint may be larger than the system dimensions and the associated radiation control area and varies in size depending on options, the concept of operations, and site-specific requirements.

² For G60 ZBx-S, G60 ZBx-T, G60 ZBx-R configurations.

The performance characteristics and photos in this document are indicative and for information only and do not represent any specific system configuration. Specifications and features of individual systems will vary based upon customer requirements, operation, supplied options, and other factors. Customers must refer to the relevant quote, proposal, or contract for the definition of a system configuration, including specifications and optional items.

Due to continual development of our products, we reserve the right to amend any of the information listed here without notice. Please note that due to U.S. laws and regulations, not all products are available for sale in all countries without restriction.

© 2022 Rapiscan Systems | American Science and Engineering, Inc.

Rapiscan | AS&E — Part of the OSI Systems family of security companies. We deliver products and services that help our customers find threats and contraband with ease and confidence, while maximizing operational efficiency. Our global service network enables us to respond to customer needs quickly and provide exceptional support, because we know that every moment of uptime is critical. We understand the importance of our customers' missions—from uncovering trade fraud, to combating terrorism, to detecting drug and weapons smuggling, to exposing illegal immigration. That's why it's our mission to help them succeed.

US Operations
829 Middlesex Turnpike
Billerica, MA 01821

UK Operations
Prospect Way
Victoria Business Park
Biddulph, Stoke-on-Trent ST8 7PL

Contact
Tel: +1.978.262.8700
Fax: +1.978.262.0533
rapiscan-ase.com

SYSTEM OPTIONS

- **Portal Mode:** Supports the drive-through scanning of traffic
- **Integrated Peripheral Devices:** Automatic license/number plate recognition system and/or automatic container code recognition system
- **Extreme Cold Weather Package:** Extends the system operating temperature to -40° C
- **Extreme Hot Weather Package:** Extends the system operating temperature to +55° C

InSight® Intelligent Image Analytics

- **InSight High Density:** Identifies high-density anomalies (transmission image only)

Rapiscan
systems

AS&E