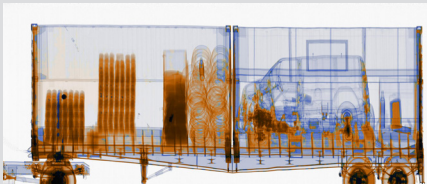


EAGLE M60

HIGH-ENERGY MOBILE INSPECTION SYSTEM

KEY FEATURES AND BENEFITS

- High-quality imaging with material discrimination
- Multiple scan modes for maximum flexibility
- Scans 5 m tall objects



Eagle M60 transmission X-ray image with material discrimination

The Eagle[®] M60 is a high-energy mobile inspection system designed with multiple operational modes for maximum flexibility as inspection needs change. The system scans stationary cargo in drive-by mode and can also scan vehicles driven through the X-ray tunnel, either with automatic cab exclusion or using CabScan[®] mode to image the entire vehicle. In driverless mode, operators can scan vehicles without requiring a driver, reducing operating costs.

The Eagle M60 features a more spacious operator control room and greater configurability to accommodate varied operational requirements. The Eagle M60 scans cargo and vehicles up to 5 meters in height and 2.8 meters in width without corner cutoff. The system is easily driven over public roads and quickly deployed after arriving on site.

SPECIFICATIONS

EAGLE M60

TYPICAL DRIVE-BY PERFORMANCE

	M60-S	M60-T	M60-R
Steel Penetration	310 mm	330 mm	320 mm
Wire Resolution	1.2 mm	1.2 mm	0.8 mm
Spatial Resolution	4 mm (H) 4 mm (V)	4 mm (H) 4 mm (V)	3 mm (H) 3 mm (V)

OPERATING FEATURES

- **X-ray Source:** 6 MeV
- **Crew:** Minimum of two operators (driver and analyst); ground guide and additional analysts optional
- **Scan Modes:** Drive-by with optional portal and CabScan modes
- **Scan Direction:** Bi-directional in drive-by mode
- **Scanning Speed:** 0.13, 0.26, 0.4 m/s in drive-by; 3–8 km/hr in portal mode
- **System Throughput:** Up to 80 trucks per hour in portal mode
- **Set-up Time:** 20 min in standard operating environment
- **Shore Power Requirements (option):** 50 Hz: 400 V, 63 A, 44 kVA; 60 Hz: 220 V, 125 A, 48 kVA

SYSTEM DIMENSIONS AND SPECIFICATIONS

Chassis

- **Mercedes-Benz® Truck:** As determined by country homologation

Stowed Dimensions

- **Length:** 11.0 m (36 ft 1 in)
- **Width:** 2.5 m (8 ft 2 in)
- **Height:** 4.0 m (13 ft 1 in)

Deployed Dimensions

- **Length:** 11.0 m (36 ft 1 in)
- **Width:** 8.0 m (26 ft 3 in)
- **Height:** 5.9 m (19 ft 4 in)

Maximum Scanned Object Dimensions

- **Width:** 2.8 m (9 ft 2 in)
- **Height:** 5.0 m (16 ft 5 in)
- **Minimum Scan Height:** 0.4 m (1 ft 4 in) from ground

ENVIRONMENT

- **Operating Temperature:** -10 °C to 40 °C (14 °F to 104 °F)
- **Maximum Wind Speed:** 40 km/hr

HEALTH AND SAFETY

- **Open Radiation Exclusion Zone¹ (in drive-by mode; 25 trucks per hour):**
40 m L x 50 m W (131 ft 3 in L x 164 ft W)
- **Radiation Dose at Exclusion Zone Boundary:** 0.5 µSv in any one hour
- **Radiation Dose to Driver (in portal mode):** Less than 0.25 µSv per scan
- **Radiation Dose to Crew:** Less than 0.5 µSv in any one hour
- **Radiation Dose to Cargo:** Less than 10 µSv per scan

¹ L = Scan direction. W = Beam direction.

The performance characteristics and photos in this document are indicative and for information only and do not represent any specific system configuration. Specifications and features of individual systems will vary based upon customer requirements, operation, supplied options, and other factors. Customers must refer to the relevant quote, proposal, or contract for the definition of a system configuration, including specifications and optional items.

Due to continual development of our products, we reserve the right to amend any of the information listed here without notice. Please note that due to U.S. laws and regulations, not all products are available for sale in all countries without restriction.

© 2020 Rapiscan Systems | American Science and Engineering, Inc.

Rapiscan | AS&E — Part of the OSI Systems family of security companies. We deliver products and services that help our customers find threats and contraband with ease and confidence, while maximizing operational efficiency. Our global service network enables us to respond to customer needs quickly and provide exceptional support, because we know that every moment of uptime is critical. We understand the importance of our customers' missions—from uncovering trade fraud, to combating terrorism, to detecting drug and weapons smuggling, to exposing illegal immigration. That's why it's our mission to help them succeed.

US Operations
829 Middlesex Turnpike
Billerica, MA 01821

UK Operations
Prospect Way
Victoria Business Park
Biddulph, Stoke-on-Trent ST8 7PL

Contact
Tel: +1.978.262.8700
Fax: +1.978.262.0533
rapiscan-ase.com

SYSTEM OPTIONS

- **Portal Mode:** Supports the drive-through scanning of traffic. Requires the purchase of traffic control and monitoring devices
- **CabScan Mode:** While in portal mode, safely scans the cab of the truck from front bumper to start of cargo
- **Driverless Mode:** System scans vehicles by autonomously moving between start and stop markers
- **Variable Boom:** Allows the operator to set the detector at 5–10 degrees from perpendicular to obtain an angled view of scanned cargo
- **Integrated Radiation Detection:** Gamma or gamma/neutron
- **Integrated Peripheral Devices:** License/number plate recognition system and container code recognition system
- **Extreme Cold Weather Package:** Extends the system operating temperature to -40 °C
- **Extreme Hot Weather Package:** Extends the system operating temperature to +55 °C
- **Car Scanning Ramp:** Stowed on board

InSight™ Intelligent Image Analytics

- **InSight High Density:** Identifies high-density anomalies

Rapiscan
systems

AS&E