

EAGLE T25

TRAILER-MOUNTED, DRIVE-THROUGH INSPECTION SYSTEM

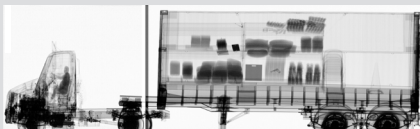
KEY FEATURES AND BENEFITS

- Robust inspection system built on a rugged trailer platform
- High-throughput screening of up to 60 trucks per hour
- Deployed in minutes for fast response to changing operational requirements



The Eagle[®] T25 is a trailer-mounted, drive-through inspection system with material discrimination for efficient screening of cargo for threats and contraband. The fully self-contained unit can be easily towed and rapidly deployed. The system offers portal mode operation with automatic cab exclusion or optional CabScan[®] mode to image the entire vehicle. Vehicles are scanned as they drive through the tunnel at 3–8 km/hr (2–5 mph).

The Eagle T25 scans vehicles up to 4.6 meters in height and 2.8 meters in width without corner cutoff. The system is built on a commercially available, heavy-duty, solid-frame trailer chassis with 2 rear axles. For added personnel safety, the Eagle T25 can be operated from 100 meters away from the system with armored Ethernet cable or, optionally, up to 300 meters away using armored fiber optic cable.



Eagle T25 X-ray image

SPECIFICATIONS

EAGLE T25

TYPICAL PERFORMANCE

- **Steel Penetration:** 190 mm
- **Wire Resolution:** 1 mm

OPERATING FEATURES

- **X-ray Source:** 2.5 MeV
- **Crew:** One inspector
- **Scan Modes:** Portal drive-through mode only; start of cargo to rear bumper or optional CabScan mode
- **Scan Direction:** One direction from rear
- **Scanning Speed:** 3–8 km/hr
- **System Throughput:** Up to 60 trucks per hour
- **Set-up Time:** 30 min in standard operating environment
- **Shore Power Requirements (option):** 50 Hz; 400 V, 63 A, 44 kVA

SYSTEM DIMENSIONS¹ AND SPECIFICATIONS

Stowed Dimensions

- **Length:** 7.3 m (23 ft 10 in)
- **Width:** 2.6 m (8 ft 6 in)
- **Height:** 3 m (9 ft 10 in)

Deployed Dimensions

- **Length:** 7.5 m (24 ft 7 in)
- **Width:** 7.3 m (23 ft 11 in)
- **Height:** 5.9 m (19 ft 4 in)

Maximum Scanned Object Dimensions

- **Width:** 2.8 m (9 ft 2 in)
- **Height:** 4.6 m (15 ft 1 in)
- **Minimum Scan Height:** 0.4 m (1 ft 4 in) from ground

ENVIRONMENT

- **Operating Temperature:** -10 °C to 40 °C (14 °F to 104 °F)
- **Maximum Wind Speed:** 40 km/h

HEALTH AND SAFETY

- **Open Radiation Control Area (RCA) Boundary^{1,2} (60 trucks per hour):** 25 m L x 36 m W (82 ft L x 118 ft W)
- **Radiation Dose at RCA Boundary³:** 0.5 µSv in any one hour
- **Radiation Dose to Driver:** Less than 0.25 µSv per scan
- **Radiation Dose to Crew:** Less than 0.5 µSv in any one hour
- **Radiation Dose to Cargo:** Less than 0.5 µSv per scan

¹ Total site footprint may be larger than the system dimensions and the associated radiation control area and varies in size depending on options, the concept of operations, and site-specific requirements.

² L = Scan direction. W = Beam direction.

³ Radiation dose at the RCA boundary is provided for reference only. Customers should determine the boundary dose based on site conditions, local regulations, operational factors, and other considerations.

The performance characteristics and photos in this document are indicative and for information only and do not represent any specific system configuration. Specifications and features of individual systems will vary based upon customer requirements, operation, supplied options, and other factors. Customers must refer to the relevant quote, proposal, or contract for the definition of a system configuration, including specifications and optional items. Due to continual development of our products, we reserve the right to amend any of the information listed here without notice. Please note that due to U.S. laws and regulations, not all products are available for sale in all countries without restriction.

© 2022 Rapiscan Systems | American Science and Engineering, Inc.

Rapiscan | AS&E — Part of the OSI Systems family of security companies. We deliver products and services that help our customers find threats and contraband with ease and confidence, while maximizing operational efficiency. Our global service network enables us to respond to customer needs quickly and provide exceptional support, because we know that every moment of uptime is critical. We understand the importance of our customers' missions—from uncovering trade fraud, to combating terrorism, to detecting drug and weapons smuggling, to exposing illegal immigration. That's why it's our mission to help them succeed.

US Operations
829 Middlesex Turnpike
Billerica, MA 01821

UK Operations
Prospect Way
Victoria Business Park
Biddulph, Stoke-on-Trent ST8 7PL

Contact
Tel: +1.978.262.8700
Fax: +1.978.262.0533
rapiscan-ase.com

SYSTEM OPTIONS

- **CabScan® Mode:** Safely scans the cab of the truck, from front bumper to start of cargo
- **Extended Remote Operation:** For operation up to 300 m away from the system using armored fiber optic cable
- **Extreme Cold Weather Package:** Extends the system operating temperature to -30 °C
- **Extreme Hot Weather Package:** Extends the system operating temperature to +50 °C

Rapiscan
systems

AS&E