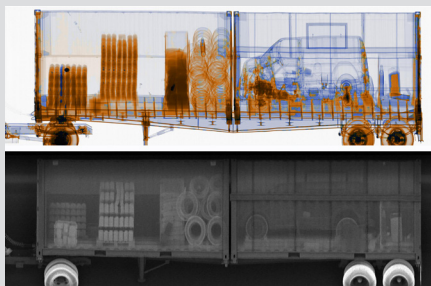


# EAGLE T60 ZBx

HIGH-ENERGY, MULTI-TECHNOLOGY, TRAILER-BASED INSPECTION SYSTEM

## KEY FEATURES AND BENEFITS

- High-quality imaging with material discrimination
- Z Backscatter imaging for enhanced detection of organic threats and contraband
- Easily towed and deployed with multiple scan modes for maximum flexibility



The Eagle T60 ZBx produces two X-ray images in a single scan: a high-energy transmission image and a Z Backscatter image

The Eagle® T60 ZBx is an advanced trailer-mounted inspection system that combines high-energy transmission imaging with Z Backscatter® technology for comprehensive inspection of cargo and vehicles. The transmission image provides high penetration and resolution with material discrimination, while Z Backscatter technology provides photo-like images that highlight organic threats and contraband such as drugs, currency, cigarettes, and explosives.

The trailer scans stationary cargo in autonomous drive-by mode, allowing operators to screen unoccupied vehicles for bumper-to-bumper inspection. In optional portal mode, the trailer scans vehicles driven through the X-ray tunnel, which can be used either with automatic cab exclusion or with CabScan® mode to image the entire vehicle. The Eagle T60 ZBx also operates in Z Backscatter-only mode in order to generate Z Backscatter images without the need to deploy the boom. The on-board inspection office can house up to four inspectors to facilitate high-throughput operation.

The Eagle T60 ZBx is built on a commercially available, heavy-duty, solid-frame trailer chassis with 2 rear axles and a standard fifth wheel for rapid and safe connection to standard tractor units capable of towing a load of at least 25 metric tons.

# SPECIFICATIONS

## EAGLE T60 ZBx

### TYPICAL DRIVE-BY PERFORMANCE

	T60 ZBx-S	T60 ZBx-T	T60 ZBx-R
<b>Steel Penetration</b>	310 mm	330 mm	320 mm
<b>Wire Resolution</b>	1.2 mm	1.2 mm	0.8 mm
<b>Spatial Resolution</b>	4 mm (H) 4 mm (V)	4 mm (H) 4 mm (V)	3 mm (H) 3 mm (V)

### OPERATING FEATURES

- **X-ray Source:** 6 MeV
- **Crew:** Up to 4 analyst stations and optional ground guide
- **Scan Modes:** Autonomous drive-by mode, Z Backscatter-only mode, and optional portal and CabScan modes
- **Scan Direction:** Bi-directional in drive-by mode
- **Scanning Speed:** 0.13, 0.26, 0.4 m/s in drive-by mode; 3–8 km/hr in portal mode
- **System Throughput:** Up to 70 trucks per hour in portal mode
- **Set-Up Time:** 20 min in standard operating environment
- **Shore Power Requirements (option):**
  - **50 Hz:** 400 V, 63 A, 44 kVA
  - **60 Hz:** 220 V, 125 A, 48 kVA

### SYSTEM DIMENSIONS AND SPECIFICATIONS

#### Stowed Dimensions

- **Length:** 11.9 m (39 ft 1 in)
- **Width:** 2.5 m (8 ft 2 in)
- **Height:** 4 m (13 ft 1 in)

#### Deployed Dimensions

- **Length:** 11.9 m (39 ft 1 in)
- **Width:** 8.3 m (27 ft 3 in)
- **Height:** 5.9 m (19 ft 4 in)

### ENVIRONMENT

- **Operating Temperature:** -10 °C to 40 °C (14 °F to 104 °F)
- **Maximum Wind Speed:** 40 km/h

### HEALTH AND SAFETY

- **Open Radiation Exclusion Zone<sup>1</sup> (70 trucks per hour):** 40 m L x 50 m W (131 ft L x 164 ft W)
- **Radiation Dose at Exclusion Zone Boundary:** 0.5 µSv in any one hour
- **Radiation Dose to Driver:** Less than 0.25 µSv per scan
- **Radiation Dose to Crew:** 0.5 µSv in any one hour
- **Radiation Dose to Cargo:** Less than 20 µSv per scan

<sup>1</sup> L = Scan direction. W = Beam direction.

The performance characteristics and photos in this document are indicative and for information only and do not represent any specific system configuration. Specifications and features of individual systems will vary based upon customer requirements, operation, supplied options, and other factors. Customers must refer to the relevant quote, proposal, or contract for the definition of a system configuration, including specifications and optional items.

Due to continual development of our products, we reserve the right to amend any of the information listed here without notice. Please note that due to U.S. laws and regulations, not all products are available for sale in all countries without restriction.

© 2021 Rapiscan Systems | American Science and Engineering, Inc.

**Rapiscan | AS&E — Part of the OSI Systems family of security companies.** We deliver products and services that help our customers find threats and contraband with ease and confidence, while maximizing operational efficiency. Our global service network enables us to respond to customer needs quickly and provide exceptional support, because we know that every moment of uptime is critical. We understand the importance of our customers' missions—from uncovering trade fraud, to combating terrorism, to detecting drug and weapons smuggling, to exposing illegal immigration. That's why it's our mission to help them succeed.

**US Operations**  
829 Middlesex Turnpike  
Billerica, MA 01821

**UK Operations**  
Prospect Way  
Victoria Business Park  
Biddulph, Stoke-on-Trent ST8 7PL

**Contact**  
Tel: +1.978.262.8700  
Fax: +1.978.262.0533  
rapiscans-ase.com

### SYSTEM OPTIONS

- **Portal Mode:** Supports the drive-through scanning of traffic. Requires the purchase of traffic control and monitoring devices
- **CabScan Mode:** While in portal mode, safely scans the cab of the truck from front bumper to start of cargo
- **Variable Boom:** Allows the operator to set the detector at 5–10 degrees from perpendicular to obtain an angled view of scanned cargo
- **Integrated Radiation Detection:** Gamma or gamma/neutron
- **Integrated Peripheral Devices:** License/number plate recognition system, container code recognition system, and manifest scanner
- **Extreme Cold Weather Package:** Extends the system operating temperature to -40 °C
- **Extreme Hot Weather Package:** Extends the system operating temperature to +55 °C

### InSight™ Intelligent Image Analytics

- **InSight High Density:** Identifies high-density anomalies (transmission image only)

**Rapiscan**  
systems

**AS&E**